

NURTURING SUCCESS IN **All** CHILDREN SINCE 1956



# TLC Learning Center

Year End Report  
2016



CELEBRATING CHILDHOOD AND  
DIVERSE ABILITIES EVERYDAY!

Dedicated to the memory  
of Ximena Mendoza

TLC Learning Center

611 Korte Parkway, Longmont, CO 80501

303.776.7417 (p) 303.776.7471 (f)

501(c)3 ID 84-0523717

[www.LearningWithTLC.org](http://www.LearningWithTLC.org)





# Table of Contents

Letter from the Executive Director .....	1
History, Mission, and Vision .....	2
Board of Directors .....	3
Educational Services .....	4
Therapeutic Services .....	5
Parent Letter .....	6
2017-2018 Events .....	7
60th Anniversary Celebration.....	8-9
Income & Expenses .....	10-11
2016 Donors .....	12-16
In Memoriam.....	17

# Letter From the Executive Director

Dear Friends,

Welcome to the 2016 TLC Learning Center Annual Report! I am so thrilled to share the news of TLC Learning Center this past year and how fortunate I feel to be part of such a great organization that is so loved and supported by our community.

2016 was an amazing year for TLC Learning Center. As we review 2016, probably the most notable event was that TLC Learning Center turned 60 years old! That's a huge accomplishment for any organization and tells me that this is a special place that is well loved by this community. We celebrated this milestone in October of 2016 with hundreds of folks coming out to share stories of how TLC Learning Center was a part of their life, how serving on the board of directors was fulfilling, and how some have been coming to our wonderful fundraising events for years! It was especially fun for me to hear your personal stories, many of which are so humbling and touching.

For 60 years now, TLC Learning Center has maintained the wonderful mission to provide, in a fiscally responsible manner, early childhood education and therapeutic services to assist each child in reaching his or her highest potential.

The year 2016 was also a milestone year for TLC Learning Center financially. For the first time since we moved into the new building in 2005, we finished the year with a healthy and positive bottom line! This is in large part due to our education and therapeutic services efficiency, exceeding our two special event goals, and to our dedicated supporters who contributed to TLC.

We have been able to expand the number of children we serve in our educational services department, and have been able to maintain full caseloads with waitlists in therapeutic services.

2017 is already shaping up to be an amazing year for TLC Learning Center and we are excited to continue to share about how we are expanding to reach more children and families. We will continue to open new classrooms, expand programs and services, and diversify our funding sources. We want to maintain this level of success for the next 60 years and with your support, we know this is possible.

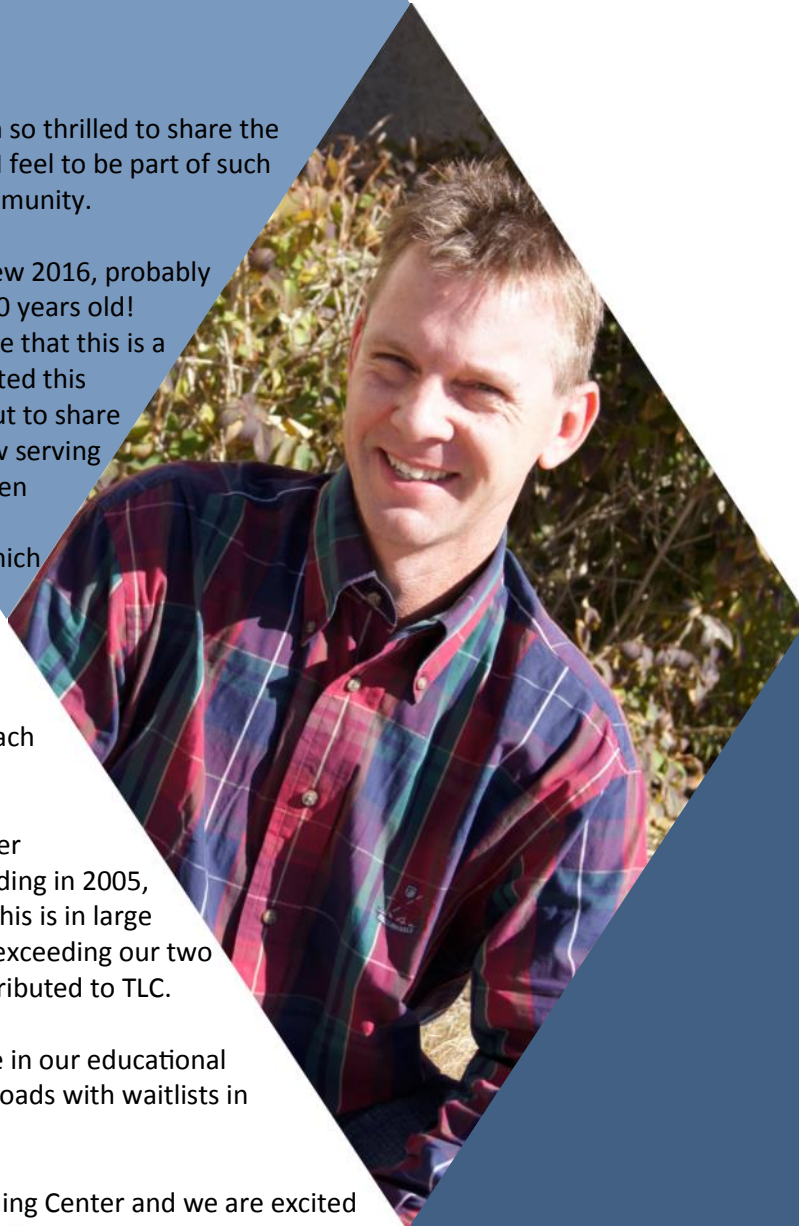
Our door is always open for a tour of the facilities and we are eager to share the message of TLC to civic groups, youth organizations, and other community partners.

We look forward to seeing many of you at our Annual Christmas Tree Festival on December 2nd and 3rd at the Plaza Conference Center. Tickets will go on sale in early November.

Sincerely,



Matt Eldred  
Executive Director



# TLC HAS BEEN PROUDLY SERVING BOULDER COUNTY AND THE ST. VRAIN VALLEY SINCE 1956

## Mission

To provide, in a fiscally responsible manner, comprehensive early childhood education and therapeutic services to assist each child in reaching his or her highest potential.



## Vision

TLC will be recognized as an exemplary community partner and group of caring and dedicated professionals who—through a commitment to our mission and core values—provide unique, comprehensive early childhood development and therapeutic services that are measured by the success of each individual child.



## History

TLC, known as The Tiny Tim Learning Center until October 2013, was founded by local Longmont families as the United Cerebral Palsy Association of Boulder County in 1956. TLC has grown and evolved throughout the years to continuously serve children with high-quality services and care. Today, TLC provides comprehensive early childhood education for children both with and without special needs from eight weeks to six years old, and pediatric physical, occupational, and speech therapies for children from birth to 12 years old.

While our history is rich with stories of the impact TLC has had on children and their families over the years, our focus remains on the future. We are committed to maintaining the scope and quality of our programs, and exploring and implementing inventive 'best practices.'



VICKI SCHLAGEL

*President*

Schlagel Farms

BIFF CHRISMAN

*Vice President*

State Farm

SHELLY MURPHY

*Treasurer*

St. Vrain Valley School District

WHITNEY CARLSON, D.C.

*Secretary*

Carlson Family Chiropractic

AMY FRENCH-TROY

TLC Parent & Alexander Dawson  
School

KATE KEISER

Stover & Spitz LLC

LISA MICHALSKI, CFA

Traffic Signal Controls, Inc.

SHARON O'LEARY

St. Vrain Valley School District,  
Retired

DAVID ROSSMANN

Brock & Company

ANDREA SMITH

TLC Alumni Parent & University  
Corporation for  
Atmospheric Research

# TLC Board of Directors



# Educational Services

## PRESCHOOL, TODDLERS, AND INFANTS

Dear Friends,

2016 was a busy and exciting year for the Educational Services Department at TLC. We expanded services for our youngest students with the opening of a third toddler classroom in June 2016. TLC is now able to serve 37 children eight weeks to three years of age in our infant and toddler classrooms (an increase of 24% availability). Our preschool classrooms are also in high demand, evidenced through waiting lists for all classrooms, and tours for over 80 families in the last eight months of 2016.

The success of every child is our ultimate goal. Teaching Strategies GOLD student assessment data for 2016 is evidence of a focus on quality instruction and quality professional development. GOLD measures fall-to-spring student growth, based on national norms, in all areas of a child's development. We are thrilled to report that 96% of TLC students achieved their expected growth in 2016! Students receiving therapeutic services (40-50% of TLC's student population) are included in this growth data.

TLC's Colorado Shines Level 4 program quality rating resulted in a higher level of reimbursement for low-income students funded through Colorado's Child Care Assistance Program in 2016. This new CCAP "tiered reimbursement" helps to support our ongoing quality initiatives, and is significant when considering that 25% of TLC students served in 2016 were CCAP-eligible. An additional 30-35% of students received TLC scholarship assistance, thanks to the contributions of our amazing donors!

I am so proud to be part of this unique early education center with its inclusive classrooms, acceptance of diverse students and families, and commitment to the success of all. Success is accomplished with research-based curriculum and strategies, a collaborative team approach, high quality professional development, a supportive community, involved parents, and a committed staff. Thanks and "hats off" to all who help us thrive!



Cindy Wickham  
Child Care Director/ Educational Services Manager



# Therapeutic Services

## PEDIATRIC PHYSICAL, OCCUPATIONAL, AND SPEECH THERAPIES

Dear Friends,

Wow! It's hard to believe another year has flown by. Our Occupational, Physical, and Speech and Language Therapists have all been busy! This past year we have made over 5500 appointments! We provide evaluation, treatment, and consultations in a variety of settings. Here at TLC we treat kids in our center-based program and in the Educational Services programs. Each classroom has therapists dedicated to their team. We continue to see children in their homes and other early learning settings through both our Home Care Agency license and our relationship with Imagine! We continue to provide OT and PT to babies at Longmont United Hospital and have also taught some classes to new nurses that will be working with those tiny babies. One of our OT's is delivering direct OT, consultation, and evaluations through our partnership with CU Boulder's Child Learning Center. We also provide Brain Integration Technique, YogaKids, and Lactation Counseling through our Therapy Services department.

As a manager, I represent TLC at a variety of county-wide meetings. It's always such a pleasure to represent us and know that we are leaders in what we do! Our inclusive model for early learning is one that I am so proud of, as well as our ability to provide intervention to babies and on into preschool, and for kids in their early childhood years.

Continuing Education has been front and center this year as we continue to educate our staff with the Pyramid Plus Approach. This is a social and emotional approach to early intervention that we use with all children, but it especially ties in with the children we see with sensory processing issues. This past year we have also had therapists learn more about babies with cerebral palsy, Handwriting Without Tears for young children, lactation and so much more.

TLC continues to have a Parent Toolkit Night where we present to parents on a variety of topics. Our sessions are parent driven and hands on. We have presented on feeding and mealtime issues, challenging behaviors, and how to foster friendships. It's been a successful partnership with our parents.

*Shari Y. Karmen OTR*

Shari Y. Karmen, Occupational Therapist /  
Therapeutic Services Manager



# Parent Letter

I have to admit that recognizing the start of another new school year is a bit challenging this time around. Very soon, our youngest child, Polly, will begin her final year at TLC. When we first joined this thriving community in Fall 2014, Polly was not quite a year old and her big brother was beginning Pre-Kindergarten. It has been remarkable to witness the amount of growth that she has achieved during her time at your school. Three short years ago she wasn't yet able to walk and just the other day she proudly signed her name to her grandpa's birthday card in the shaky handwriting of a preschooler well on her way to kindergarten.

THEY HAVE LEARNED  
RESPECT FOR OTHERS  
AND THEIR DIFFERENCES,  
AND HAVE LEARNED TO  
BE BOTH CELEBRATORY  
AND EMPATHETIC OF  
THOSE THINGS THAT  
MAKE THEM, AND EACH  
OF THEIR PEERS, UNIQUE.

Our eldest child has flourished in elementary school and the compliments that we hear from his teachers regarding his academics, and especially his social-emotional skills, are due in large part to his time at TLC. During moments of stress, anxiety, or the usual over-exuberance that small children often feel, both Polly and her brother rely on the skills that their TLC teachers gave them to self-regulate their emotions. I will often hear them say quietly to themselves "check your engine" or "take a deep breath" as they work through a challenging situation. Sometimes Polly will do one of Miss Mia's yoga poses to "calm her engine," which is both sweet and practical all at the same time.

One of the most important things that both of our children have learned at TLC, however, is respect. They have learned respect for others and their differences, and have learned to be both celebratory and empathetic of those things that make them, and each of their peers, unique. They have also learned respect for themselves and how to keep their bodies safe from others. They both know how to politely ask people to respect their personal space and how to ask others to "please stop" when they are doing something that makes them feel uncomfortable. While much of this can be attributed to TLC's social-emotional curriculum and its exemplary staff, what makes this model truly successful is the diverse makeup of the TLC community.

Each classroom includes children from all walks of life; families of myriad socio-economic strata, racial and ethnic backgrounds, religious differences, and family structure. Numerous studies have shown that all children benefit from diverse learning environments and TLC's inclusive model provides a framework in which kids not only learn academics, but also how to be a caring, empathic member of one's community who also celebrates their own unique and authentic selves.

In some ways, three years doesn't seem like a very long time, but in the landscape of child development three years is an eternity. The amount of skills and knowledge that a small human acquires in those first years is both staggering and miraculous. Our children's lives have been greatly enriched by spending their formative years at TLC, and while I am glad they are growing and spreading their wings, leaving the TLC nest for good will indeed be bittersweet as we will dearly miss this supportive and inclusive learning community. Thank you for the foundation you have laid for our children. They are undoubtedly off to do great things thanks to the fantastic folks at TLC!

AMY FRENCH-TROY, TLC PARENT AND BOARD MEMBER



# 2017-2018 Events

## Christmas Tree Festival

December 2nd , 2017, 5:30PM

December 3rd, 2017 10:00AM

The annual Christmas Tree Festival hosts over 800 people during an evening and morning event. Beautiful trees are raffled, prizes won, and the mission of TLC shared with the community. Tickets go on sale November 2nd, 2017.

## Colorado Gives Day

Join all of Colorado to donate to your favorite charities through the Community First Foundation on December 5th, 2017, online at: [www.coloradogives.org/TLCLearningCenter](http://www.coloradogives.org/TLCLearningCenter)

## Kentucky Derby Party

TLC's fourth annual Kentucky Derby Party will be on May 5th, 2018, at Shupe Homestead. This event will be the bourbon toast of Longmont in the spring of 2018, so don't miss out!

### Sponsorship, Tree, & Auction item donation information:

[MBaker@LearningWithTLC.org](mailto:MBaker@LearningWithTLC.org)

When you give to TLC Learning Center to support inclusive early childhood education and pediatric therapy programs, you can take advantage of tax credit programs that enable you to give more, receive something in return and possibly multiply your gift in the process. Help increase the quality and availability of child care and early learning in Boulder County through the Child Care Contribution Credit (CCCC.)

<b>Contribution</b>	<b>\$250</b>	<b>\$1,250</b>	<b>\$2,500</b>	<b>\$5,000</b>	<b>\$25,000</b>
<b>Colorado Child Care Contribution Credit</b>	<b>(\$125)</b>	<b>(\$625)</b>	<b>(\$1,250)</b>	<b>(\$2,500)</b>	<b>(\$12,500)</b>
<b>Colorado Tax Savings</b>	<b>(\$12)</b>	<b>(\$58)</b>	<b>(\$116)</b>	<b>(\$232)</b>	<b>(\$1,158)</b>
<b>Federal Tax Savings</b>	<b>(\$83)</b>	<b>(\$413)</b>	<b>(\$825)</b>	<b>(\$1,650)</b>	<b>(\$8,250)</b>
<b>After tax cost of giving</b>	<b>\$31</b>	<b>\$155</b>	<b>\$309</b>	<b>\$619</b>	<b>\$3,093</b>

- 100% of the credits you have accrued from donations for tax years 2015-2019 will be claimable.
- The tax credit is limited to donations up to \$100,000.00 per year. The credit allowed shall not exceed the tax liability for the year. Any excess credits may be carried forward for up to five years.
- In-kind contributions, including stock, property, or any non-monetary donations, are not eligible.
- Donate easily and securely at [www.LearningWithTLC.org/donate](http://www.LearningWithTLC.org/donate)





## TLC Learning Center

Diamond Anniversary Celebration, 1956 - 2016

TLC Learning Center celebrated its 60th Anniversary in 2016 with a community party on October 7, 2016, that honored all of the staff, volunteers, children, and families who have been part of TLC throughout the years. Pacific Auction hosted the party and volunteers created a timeline chronicling TLC's history from inception to celebration. Board members poured through photos, newspaper clippings, and memorabilia to organize and preserve it for future generations of TLC staff and students. All of the board's archive efforts were displayed for the community to peruse and enjoy at the party. We're proud to have been part of TLC's 60th anniversary, and look forward to another 60 years of service to children and families.



TLC staff, July 2016



Celebrating Sixty Years of Children **AND** Service ,

# Income & Expenses

## 2016 Financial Highlights

	<u>2016</u>	<u>2015</u>
<b>Revenue:</b>		
Contributions & Grants	\$416,027.00	\$231,673.00
Program Services	1,025,457.00	1,004,095.00
Investment Revenue	11,503.00	1,752.00
Fundraising Revenue	99,220.00	110,491.00
<b>Total Revenue</b>	<b><u>\$1,552,207.00</u></b>	<b><u>\$1,534,106.00</u></b>

### **Functional Expenses:**

Program Service Expenses	\$64,366.00	\$73,657
Salaries, Wages, & Benefits	1,170,527.00	1,279,120.00
Management & General Expenses	208,477.00	194,427
Fundraising Expenses	61,654.00	70,885
<b>Total Expenses</b>	<b><u>\$1,505,021.00</u></b>	<b><u>\$1,618,089</u></b>

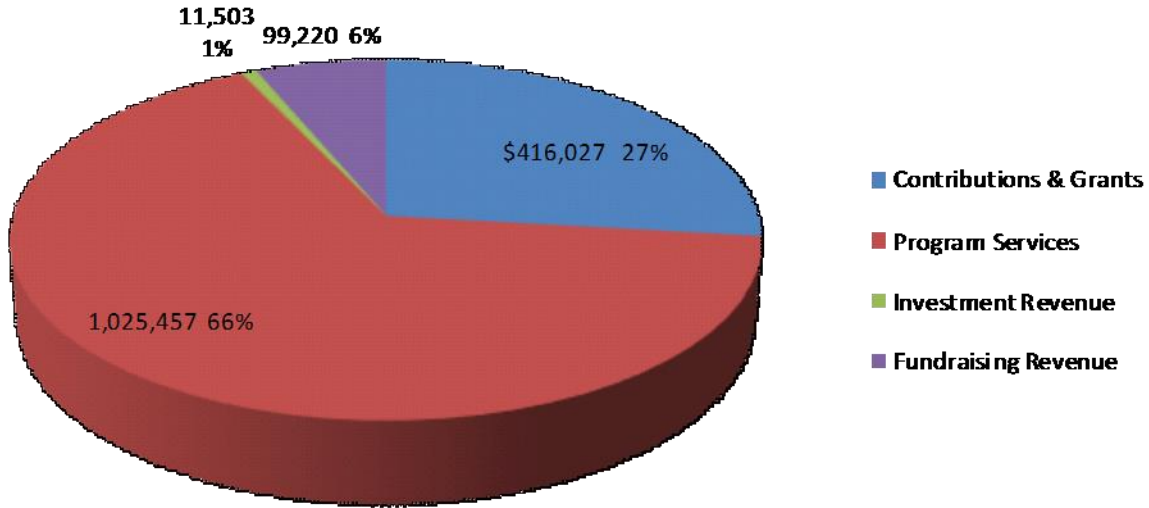
### **Balance Sheet:**

Operating Cash	\$153,497.00	\$154,685
Accounts Receivable	48,663.00	35,550
Prepaid Expenses	8,732.00	6,340
Land, Buildings, & Equipment	1,904,072.00	1,957,275
Investments	224,867.00	124,598.00
<b>Total Assets</b>	<b><u>\$2,339,831.00</u></b>	<b><u>\$2,278,448</u></b>

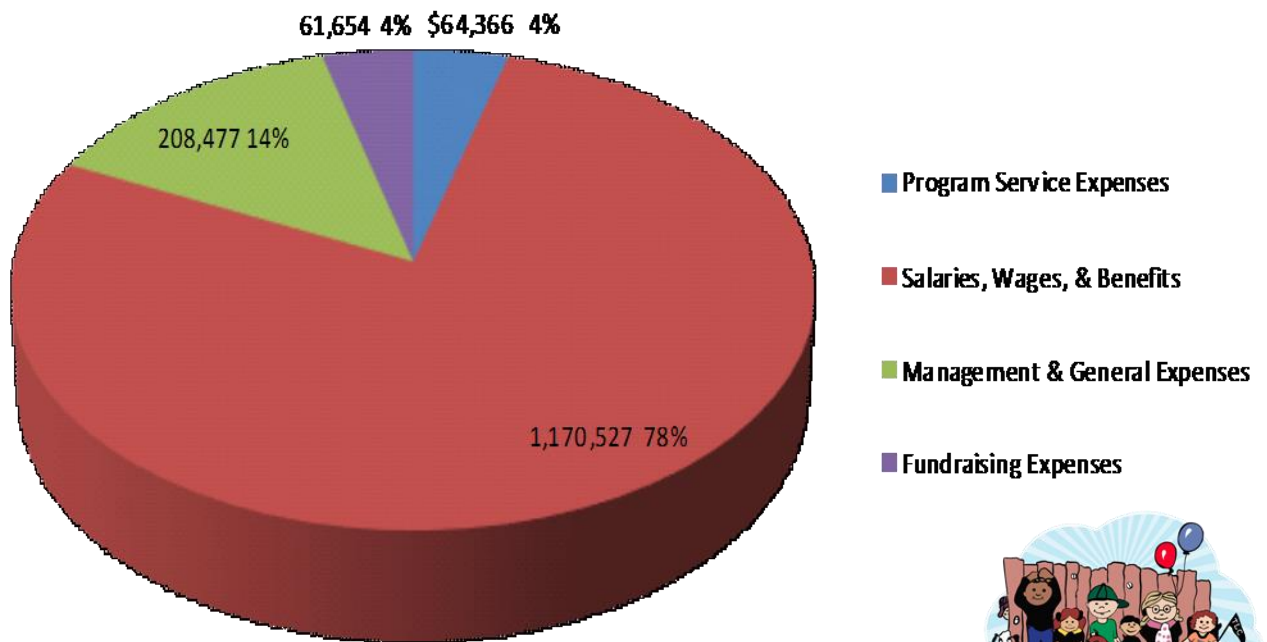
Liabilities	\$31,941.00	\$17,744
Unrestricted Net Assets	2,243,455.00	2,192,369
Temporarily Restricted Net Assets	64,435.00	68,335
<b>Total Liabilities &amp; Net Assets</b>	<b><u>\$2,339,831.00</u></b>	<b><u>\$2,278,448</u></b>

# Income & Expenses

## 2016 Revenue



## 2016 Expenses



# 2016 TLC Supporters

## Foundations, Public Sector, Corporate Donors & Sponsors

1013 Salon  
A Blind Squirrel Enterprises  
ABC Climbing  
Ace Hardware  
Adorn Home and Gift  
AEC Trust  
Ahlberg Funeral Chapel, Inc.  
Airborne Gymnastics and Dance  
Alpha Martial Arts  
Anderson Farms  
Best Western Plaza Hotel & Convention Center  
Blue Heron Specialty Products  
Boulder County Commissioners  
Box Tops for Education - General Mills  
Braly Family Foundation  
**Carlson Family Chiropractic**  
Centennial Lanes  
Cheese Importers  
Ciao Bella Hair Studio  
City of Longmont  
Cohayla Salon & Spa  
Collins Foundation  
Combined Federal Campaign  
Community Trust Fund  
Compcare, Inc.  
Cornerstone Painting Company LLC  
Crack Pots  
Crossconcepts Construction LLC  
Crown Trophy  
Denver Museum of Nature and Science  
Denver Zoo  
Diane Stow Team  
Early Childhood Council of Boulder County  
Elevations Credit Union  
Entrepreneurs' Foundation of Colorado  
ERA Tradewind Real Estate  
Family Home Health  
Fox Creek Fitness  
Gold Key Travel  
Golden Triangle Construction  
Great Divide Brewing Company  
Great Western Bank  
**Guaranty Bank & Trust Company**  
*Hattig CPA*  
Havana Manor  
Highlands Presbyterian Camp & Retreat Center  
Howe Mortuary  
IBM Employee Services Center  
Innovating Worthy Projects Foundation  
Jimmy John's

Joan's Petite Sweets  
Johnston Chiropractic  
JustGive  
Kawasaki  
King Soopers / Kroger / City Market  
Kiwanis Club of Longmont  
Kohl's  
Leslie Capizzi Designs  
Lisa and Brad Golter Fund  
Live Online Television  
Longmont Community Foundation  
Longmont Community Foundation - Don and Karen Wood Family Fund  
Longmont Community Foundation - Live and Give Longmont  
Longmont Community Foundation - McCarty Charitable Fund  
Longmont Community Foundation - Norris Family Fund  
Longmont Community Foundation - The Stewart and Sheron Golden Family Fund  
Longmont Community Foundation- Delbert & Dorothe Reddington Fund  
Longmont Community Foundation- Ed & Jan Kanemoto Fund  
Longmont Community Foundation- Ken & Cathy Winter Fund  
Longmont Dairy  
Longmont United Hospital  
Longmont Velo Bike Shop  
Lovin' Longmont  
Lucky's Market  
Lynn and Helen Clark Fund  
Madhava Mountain Honey  
Magnum Feedyard  
Main Street Investments, Inc.  
Merl F. and Albert J Yeager Fund  
**Micro Motion, Inc.**  
Mike O'Shays  
Mystic Garden Spa & Salon  
Niwot Massage  
Nixcavating, Inc  
NuMotion  
Outdoor Craftsmen  
Pacific Auction  
Pedry Construction  
Perfection Auto Body  
Phoenix Networking Group  
**Play It Again Sports**  
Premier Members Credit Union  
Prestige Chrysler Dodge Jeep  
Prime Real Estate  
Qualcomm Matching Grant Program  
Robin Event Rental  
Ron's Printing  
Rose Community Foundation  
**Schlagel Farms**  
Shoparoo

### Donor Key

- **Bold** indicates a Board Member or Board affiliated business
- *Italic* indicates a TLC staff member



TLC Learning Center  
Annual Report 2014  
[www.LearningWithTLC.org](http://www.LearningWithTLC.org)

# Thank you so much!

Silicon Valley Community Foundation - Xilinx Community Fund  
Silver Creek Organization for Performing Arts  
Snyder Jewelers  
State Farm Insurance  
Stover & Spitz LLC  
Subworks  
Sugarbeet Restaurant  
Sun Construction  
Sunflower Bank  
Sunflower Spa  
Target  
The Buell Foundation  
Terrell Construction  
The Animal Hospital  
The Community Foundation Serving Boulder County  
The Dickens Tavern  
The Egg & I  
The Flower Bin  
The TJX Foundation  
**TLC Board of Directors**  
Tracy Ayers "Live Your Dream" Memorial Fund  
True North Insurance & Financial Strategies  
University of Colorado Health (UC Health)  
Varra Financial Services  
Vectra Bank  
Vending 2 You  
Walters & Hogsett Fine Jewelers  
Wells Fargo Foundation Education Matching Gift Program  
Western Digital Foundation  
WOW! Children's Museum  
Xilinx  
Your Butcher Frank  
Zak Dirt  
Zephyr Management LLC



## Individual Givers

Our achievements during 2016 were due in large measure to the tremendous support from our community. We want to acknowledge and thank all of those who supported our mission and helped TLC positively impact the lives of so many children.

### \$5,001.00 - \$30,000.00

Anonymous Donor  
Eric & Jennifer Ostenson  
Patty and Barry Serlis  
Lila Jean Stewart

### \$1,001.00 - \$5,000.00

Colleen Abdoulah  
Lauren Cashatt  
Linda Fetterman  
Bonnie and Ron Gehringer  
Peggy and Bill Lovell  
**Cathy and Greg Ludlow**  
David and Rose Macy  
Elizabeth Michalski  
Ronald and Shari Morrow  
Mark and Jennifer Millican  
*Daniel and Stephanie Ohlsen*  
**Sharon O'Leary and Nigel Pilling**  
Susan Rampson  
Susan Wisner

### Up to \$1,000.00

Anonymous Donors  
Michelle Alexander  
Sheila Almeida  
Nancy Anderson  
Tom & Beth Anderson  
Paul Anderson  
Wanda Anderson  
Carol Andreo  
Mike Arias  
Jacqueline Arnold  
Brian Bagley  
Baadrea & Hal Bagley  
*Michelle Baker*  
Michelle Baltierras  
Bud & Susan Barber



# 2016 Individual Donors

Peggy Murray and William Berkhimer  
Elizabeth & Dennis Berry  
Frank & Andrea Bigelow  
LuAnn and Greg Billings  
Willard and Harriet Bissell  
Shela Blankinship  
*Lindsey Blechle*  
Mary Blue  
Joe and Ann Boberschmidt  
Morgan Bock  
Teresa and Steven Boettcher  
*Amanda and Brandon Boldenow*  
Christi Bova  
Robbin Bowler  
*Rob and Mary Beth Boyer*  
Don C Boyer  
Ashley Bradley  
Patty Brown  
*Amanda & Matthew Brunning*  
Carolyn and Joel Buck-Gengler  
**Whitney Carlson**  
Jan Carroll  
Nancy Case  
Elise and Peter Champe  
**Biff & Holly Chrisman**  
Laurie & David Chrisman  
Abdul Rafeeq C-K  
Barbara Clausen  
Donna Coleman  
Dennis Coombs  
Alison Miester and Gregory Corcoran  
Paul & Stacy Cornay  
Mina Cox  
Annette Crawford  
Erica Dam  
James Danielson  
Sylvia Diebel  
Don and Crystal Doane  
Karie and Jay Docheff  
Melanie Dunn  
Colleen Duran  
Anton & Jeanne Dworak  
Jim and Phyllis Dwyer  
Rodney & Joan Edmonds  
*Matt Eldred*  
Richard Engelmann  
Pam Engstrom  
Tara Hess & Neal Enssle

Rebekah and Mathew Fisher  
Melissa & Kris Ford  
Leroy Frankel  
Kathleen Freischlag  
Nelson Frissell  
John and Sally Gaddis  
Wendy and John Gaffield  
Stephanie Gallo  
Alfred and Margaret Garcia  
Donna & Robert Garcia  
Janet Gerhardt  
Rosie Gilbert  
Mike and Mia Girard  
Sherry L Goerlitz  
Andrea Shipp and Jennifer Goerlitz  
Fawn & Derek Gold  
Brad and Golter  
Brenda and Don Graffis  
*Bruce and Christy Griffith*  
*Ralph & Tavita Grimaldo*  
**Andrea Smith and Bryan Guarente**  
William Beard And Dorothy Harris-Beard  
John Haskovec  
Heather Hawkins  
Phyllis Jean Heiby  
Brigitte Hennig  
Swede and Leon Henry  
*Karianne Herdina*  
Holly & Grant Hickman  
Vickie Higgins  
Vincent & Sung-Suk Hilaire  
Cheryl Hines  
Richard & Cynthia Hoge  
Sarah L Holland  
Dianne Horn  
Kareny and Benjamin Hostelley  
Geoff and Janet Howe  
Nancy and Lou Hughes  
Pam and Jerry Ireland  
Terri Iverson  
*Breck Johnston*  
Vicki Jones  
Ken & Karen Kanemoto  
Keith & Kelli Kanemoto  
*Preston Brown & Shari Karmen*  
*Katharina Kasemir*  
*Jeff and Kathy Keith*  
Mary Kerns  
Mayrene Kiyota





# You Make TLC Possible!

Lily Klase  
Jeff & Ali Knight  
Kim Koditek  
Becky Lynn Brandli and Jeffery Kolen  
Martin Kollasch  
James & Frances Krack  
Laurie Lacey  
Nicki Lafferty  
Geeta Lalwani M.D.  
Stephanie Lambert  
Zach Laue  
Michael & Michelle Law  
George and Teri Lefever  
Dean and Anne Lehman  
Edward and Connie Lehman  
Megan LeSage  
Mary Anne and Merrill Lessley  
Sonia Locke  
Ann Long  
Al and Debbie Lucero  
Julie Lucero  
Tom & Lindsey Ludlow  
Rosalie and Bob Lynn  
Richard Lyons II & Jo Ellen Lyons  
Jorge Macias  
Danielle Maloit  
**Chris and John Martin**  
Robert McCarty  
Dennis McGilvray  
Philip Kevin McGinnis  
Linda McLaughlin  
Kate Medina  
Carl Buck and Ruben Meinhardt  
Ron and Kristy Meining  
Jamie & Miguel Mendez  
Galen Miller  
Rebecca & Neal Millett  
**Lori & Nelson Miner**  
*Lupe Morales*  
Gerald and Delores Mueller  
**Michelle and Ryan Murphy**  
Joe Check & Liz Murray  
Amy and Thaddeus Napp  
Michael and Paula Nelsen  
Erika Nelson  
James Newcomb  
Karen Nicholas



Every effort was made to acknowledge our donors from 2016. If your name, foundation, or company is not listed, please accept our sincerest apologies for the oversight. Please know your generosity is sincerely appreciated!



# 2016 Individual Donors

Amy and Oyvind Nilsen  
Brandi and Michael Numedahl  
Katie Dueber and Tate Nunley  
Scott Oliver  
Trudy & Mike Olson  
Diane Overlid  
John Owen  
Virginia Owen  
Joseph Pace  
Marian and Dennis Paulsen  
Dan & Maureen Pedry  
Jeffrey Peila  
Jean & G.J. Peila  
Dee Perry  
Eric and Janie Peterson  
Barbara Peterson  
Kevin Piletic  
Anika Pillatzke  
Kate Keiser & Adam Pinkelman  
Lynda Piper  
Andrew Pojuner  
William Pollauf  
Kara Posso  
Karen Prater  
Staci Quillen  
LaRayne Randall  
Penny and Evan Randolph  
Bob Reed  
Rychie Rhodes  
Katie Rhodes  
Allen and Megan Richardson  
Leslie Ringer  
Linda Rodgers  
Bob and Diane Roggow  
Stefano Grendele & Maria Sabadini  
Richard & Anne Salberg  
Erika Scamehorn  
Marcia Scheiding  
Candis Schey  
Bruce & Jennifer Schlagel  
Scott & Kayla Schlagel  
Betty Schlagel  
Herman Schlagel  
Keith & Sue Schlagel  
**Paul & Vicki Schlagel**

Marilyn and Keith Schmitt  
Kate Schranz  
Patricia Schwalm  
Kimberly Scott  
Mark Sheeley  
Beth and Dennis Shipp  
Jimmie & Susan Shipp  
Marlene and Vince Shryack  
Rick and Suzie Sloan  
Lily Smith  
Alma Smith  
Liz & Tom Smokowski  
Sally and Don Specht  
Kenneth Spencer  
Karen and Gary Sterkel  
Larry and Kathleen Stevens  
Larry and Jeaneen Steward  
Bernie and Leona Stoecker  
Diane Stow  
Pam Sturgen  
Dana and Michael Swenson  
Connie Syferd  
Ken & Mary Taylor  
Kathryn & Michael Thompson  
Leia Tippey  
Bryan and Kathy Towsley  
Catherine Trujillo  
*Debbie Van Thuyne*  
Christian Vanek  
Thomas Vela  
Rupa Krishnamani and Raman Venkataramani  
Nicole Vos  
Jensen and Lori Walker  
Shelly & Tim Walker  
Cinzia & Eric Wallace  
Pat Walton  
Roxanne and Quentin Wedan  
Shirley Wergin  
*Cindy & Robert Wickham*  
*Jen Willette*  
Sharon Wirth  
Melvin Green and Cindy Wood  
Marley Woods  
Bob & Jackie Wright  
Jane Wroblewski  
Benita Wolchin



TLC Dedicates 2016's  
Annual Report to the memory and life of  
❤️ Ximena Mendoza ❤️  
2011-2016





TLC  
Learning Center  
1956-2016

60 year Diamond Anniversary